



HC041-5W User Manual

Hygger CO2 Oil Film Skimmer

Support

Email: co2@hygger-online.com



This aquarium oil film skimmer efficiently removes oil films caused by fish feed, excretions, or dust particles. It maintains water clarity, enhances dissolved oxygen levels, and promotes healthier aquatic ecosystems for fish/plants.

For optimal performance, carefully read this manual before installation and operation.

1.PRODUCT FEATURES

- Vortex-style floating platform for high-efficiency oil film removal
- Ceramic shaft, suitable for freshwater/saltwater aquariums
- Quiet operation with low power consumption
- Magnetic base for easy installation

2.PACKING LIST

1x Oil film skimmer

1x Floating platform

1x Magnetic base

1x Suction cup

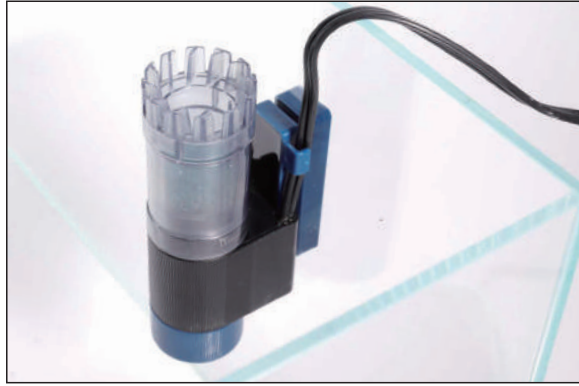
1x User manual

3.PRODUCT SPECIFICATIONS

Model	Input Voltage	Power	Flow (Max)
HC041-5W	US standard: AC 110~120V/60Hz EU/UK standard: AC 220-240V/50Hz	5W	96 GPH

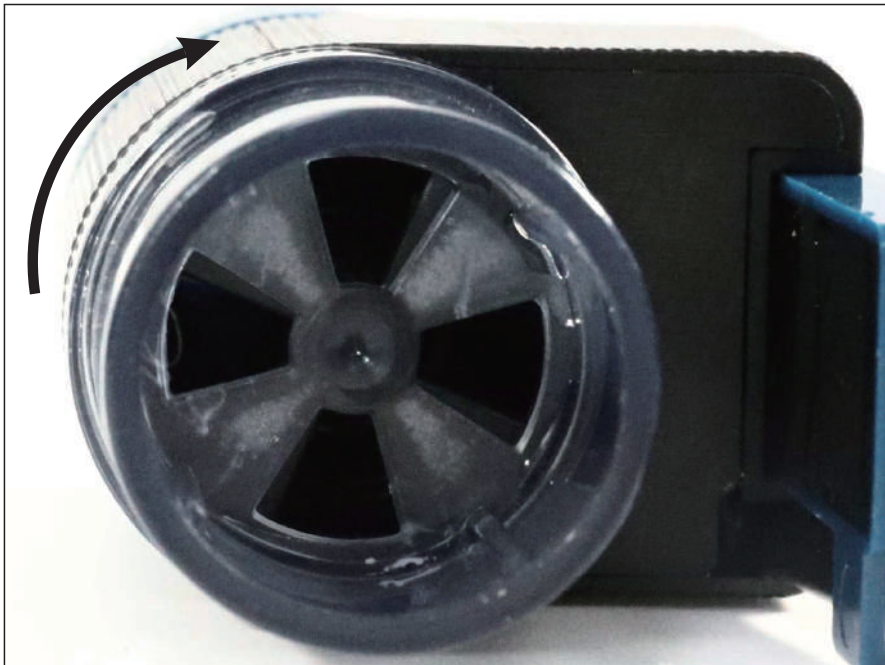
4. INSTALLATION

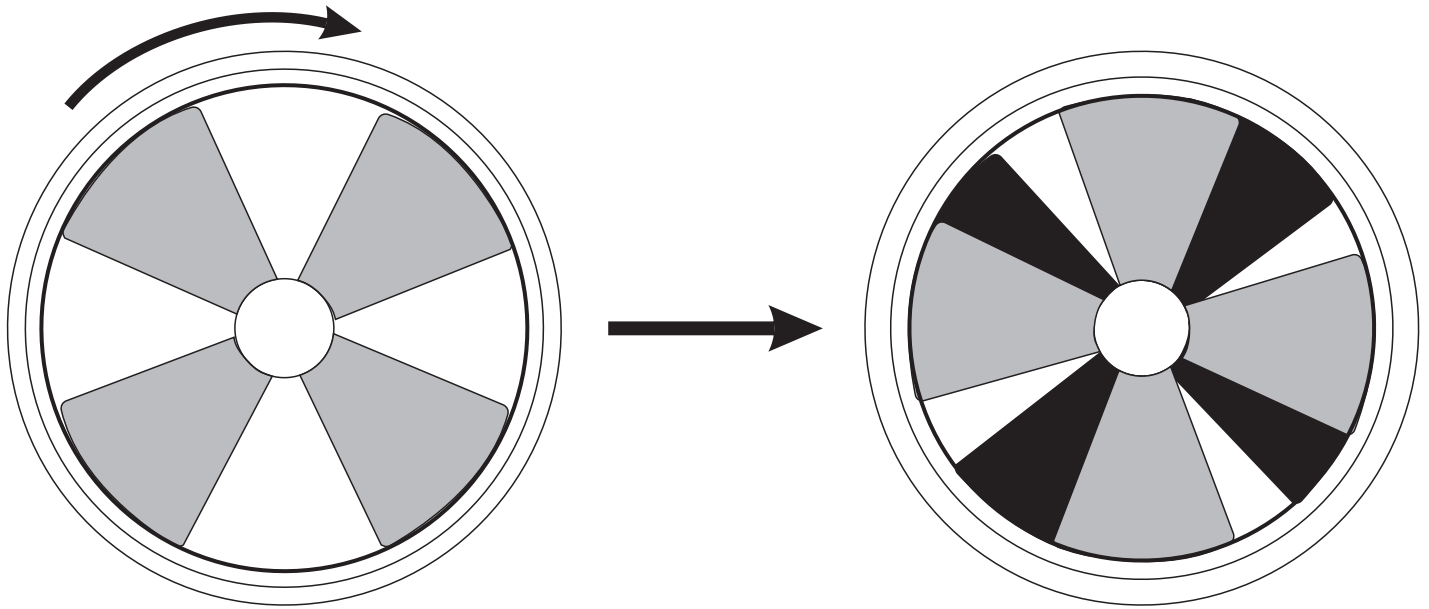
Magnetic mounting: Place the oil film skimmer on the inner glass of the aquarium, then position the magnetic base on the outside to securely attach the skimmer. (As illustrated)



5. FLOW REGULATION

The valve is currently at maximum flow; turn it clockwise to reduce the flow.





Turn it counterclockwise to increase the flow.

6.TROUBLESHOOTING

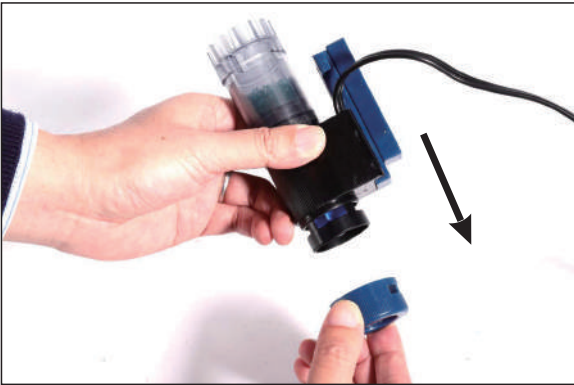
Error	Cause	Solution
The pump fails to start	No power	Check the power plug connection
	Burned-out pump	Replace the pump
Reduced flow rate	Low flow rate setting	Increase the flow rate
	Jammed impeller and rotor	Clean the impeller and rotor
	Clogged inlet/outlet/ filter sponge	Clear blockages in the inlet/outlet/filter sponge
	Filter sponge contains dirt/foreign matter	Clean the filter sponge
Abnormal sound	Jammed impeller and rotor	Clean the impeller and rotor
The pump shuts off shortly	Contaminated water	Replace with clean water

7.MAINTENANCE

1.Before performing product maintenance, disconnect all equipment and unplug power cords from the water.

2.Impeller cleaning steps:

A.Remove the outer housing.



B.First, remove the shaft sleeve, then extract the impeller rotor from the hole (use a tweezer if manual removal is difficult).



C.Clean the impeller rotor and the rotor hole.



D. Install the impeller rotor onto the shaft, then reattach the shaft sleeve.



E. Reinstall the outer housing.



8.ATTENTIONS

- Operate the product only within the voltage and frequency range indicated on the product. Do not use outside the specified range.
- Do not allow the product to run dry or operate out of water, as this may burn out the pump.
- The product must be fully submerged in water during operation.
- This product operates within water temperatures of 39°F(4°C) to 95°F(35°C). Exceeding this range may cause damage.
- If the power cord is damaged, discontinue use immediately.
- Clean and replace filter media regularly to ensure optimal performance.

Maintenance recommendations:

- Clean filter media every 1-2 weeks.
- Clean the rotor every 4-6 weeks and check if filter media replacement is needed.
- Replace filter media every 2-3 months.

9.DISPOSAL

Do not dispose of this product as unsorted municipal waste. Collection of such waste separately for special treatment is necessary. This product has to be disposed of at an authorized place for the recycling of electrical and electronic appliances rather than being disposed of together with the domestic waste. Collecting and recycling waste is a way of saving natural resources. So, please consult with your local seller to make sure the product is disposed of in an environmentally friendly way.



10.CONTACT INFORMATION

Contact us at www.hygger-online.com
Email: co2@hygger-online.com